



FRIENDS OF WOOSTER MEMORIAL PARK

P.O. Box 1776, Wooster, OH 44691
www.friendsofWMP.com

MARCH 2018

ALL MEMBERS ARE INVITED TO THE FWMP 18TH ANNUAL MEETING

Freedlander Park Chalet

Wednesday, April 11, 2018, at 7:00 PM



Mayfly nymph.

Please join us for the 18th Annual Meeting of the Friends of Wooster Memorial Park (FWMP) on Wednesday, April 11, at 7:00pm at the Freedlander Park Chalet. We will begin with finger foods and a photo show of Wooster Memorial Park (WMP), followed by park updates from the City and FWMP, election of the 2018-19 Board of Directors, and ending with our guest speaker.

Our guest speaker this year is **Skip Nault**, OARDC Entomology Professor Emeritus and President of the Clear Forks River Trout Unlimited. In **“Establishing a trout fishery in Apple Creek at Wooster’s Grosjean Park,”** Skip will share the trials, tribulations and success of the Clear Fork River Chapter of Trout Unlimited (cfrtu.org) in establishing a year round trout fishery for fly anglers in Wayne County’s Apple Creek. The trout fishery gets over 1,000 visits annually from fly anglers, is used to teach hundreds of fly fisher novices and conduct macroinvertebrate surveys, and serves as an integral part of Trout Unlimited’s highly successful Trout in the Classroom program.

Directions: The Freedlander Park Chalet is located at 400 Hillside Drive in Wooster. If heading north on Burbank Road from downtown, cross Oldman Road, then turn right onto Buena Vista or Hillside Drive; both lead into the Chalet parking lot. RSVP’s are not required.

NEXT PUBLIC EVENT FOR 2018

Trees before the Leaves

Saturday, March 31, at 2pm (Education parking)



Hazelnut bud.

NEW LINEUP OF PUBLIC PROGRAMS FOR 2018! – The Education & Public Awareness



Skunk cabbage
(E. Swank).

Committee is pleased to present a great lineup of events in WMP for 2018. Each of our winter hikes were enjoyed by 20-25 hikers.

Coming up this spring, we have hikes highlighting early signs of spring, trees before the leaves, and our popular wildflower and bird outings. In July, you can look forward to a fern walk and a firefly dusk/campfire program. Please see the included flyer for the May events, and visit FWMP’s website for events this summer and fall.

2017-18 BOARD OF DIRECTORS

President: Shelley Schrier, 330-262-9307 ♦ Vice President: Dan Buehler, 330-465-7588

Secretary: Edith Swank, 330-263-6766 ♦ Treasurer: John Parker, 330-345-7511

Directors-at-Large: Cathy Herms, 330-465-2725; Chuck Armbruster, 330-464-5755; Emily Speelman, 330-988-6101

Thank you to our event leaders! And thank you to our dedicated Committee members, John Abt (chair), Edith Swank and Mary Hetrick.



Winter hike (E. Swank).

TIME TO ELECT THE 2018-19 BOARD – At the Annual Meeting, you will vote on the 2018-19 Board of Directors. The following slate of nominees is proposed. Nominations may also be made from the floor. Terms continue for Directors Chuck Armbruster (‘19) and Emily Speelman (‘20).

- **President**, Shelley Schrier (2nd term) – Shelley is a retired school psychologist from Wooster City Schools and Buckeye Local Schools, and an avid WMP hiker. He has previously served as President, Vice-Pres, and Director.
- **Vice-President**, Cathy Herms (1st term) – Since her first hike in 1997, Cathy has recognized the amazing natural resources in WMP. She does research on weeds and invasive plants and grant writing at OARDC, and uses those skills to benefit the park.
- **Secretary**, Edith Swank (17th term) – Edith has kindly served as Secretary since the FWMP Board was created in 2002, and is continually inspired by the wonders of the park. She is a retired middle school teacher of language arts in Holmes County.
- **Treasurer**, John Parker (13th term) – John has kindly served as treasurer for the past eleven years. He is a retired Transportation HR /Safety Director, a board member for the Wooster Exchange Club, and hikes the park every week.
- **Director-at-Large (2021)**, Dan Buehler – Dan has lived in Wooster all his life. After graduating from OSU, he began working in the family business, Buehler Food Markets. Dan loves to hike with dog Bella, backpack and bird watch. He and his wife Lynn visit their three grown children in California, North Carolina and Alaska whenever possible.

AT THE PARK

Winter Weather takes its Toll – This winter’s wind, snow and ice have brought down some big trees in WMP. The City of Wooster and FWMP volunteers have done a great job getting the tangles cleared. To report a downed tree across the trail, you can contact John Parker (330-345-7511) or email friendswmp@gmail.com.



If a tree falls... (S. Schrier).

Seasonal Restroom Facilities in the Education Area – The City and FWMP are providing two porta-potties in the Education Area this season. One of the units will be ADA accessible. The facilities will remain until the end of November.



New WMP sign (S. Schrier).

What’s Big and Green and has Legs? – Answer: The beautiful new WMP sign at the main park entrance on Silver Road! The design matches the theme used for all the other City park signs. The sign acknowledges the partnership with FWMP and even uses the FWMP logo. Thank you to the City for this wonderful improvement.

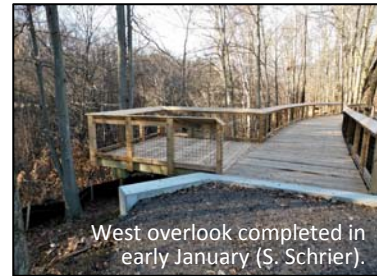
WMP Pavilion and Fire Ring Rentals – The two pavilions at WMP can now be rented for a fee. The City has installed three fire rings and a wood rack in the Education Area, and is providing campfire wood for residents who rent that pavilion. Rules for fire ring usage are posted. To rent a pavilion, please contact Wooster Recreation at 330-263-5207.



Firewood rack (J. Abt).

City to Continue Felling Ash Trees – The City will continue felling dead ash trees along park trails this year. These trees were killed by the exotic emerald ash borer and pose a hazard to hikers. Proactive felling allows us to minimize the damage the ash trees could do to park users or adjacent trees. Please **be aware** of these activities while in the park.

KENWOOD ACRES PAVING AS SOON AS WEATHER ALLOWS – All of the contracted wooden structures for the Kenwood ADA trails are now completed. These include two boardwalks with overlooks and a bridge over a ravine, which also has an overlook. Mc.B Paving, who is the general contractor for the trail project, contracted Simonson Construction to do the construction. One exception is the east overlook, which was built last summer by Eagle Scout Ben Bower. Simonson workers bravely completed building the west overlook in January in single-digit weather. We thank these tradesmen for their incredibly beautiful and professional job.



West overlook completed in early January (S. Schrier).

The trails on the Kenwood got lots of use this past fall and winter, despite not being paved. But it won't be long now! The

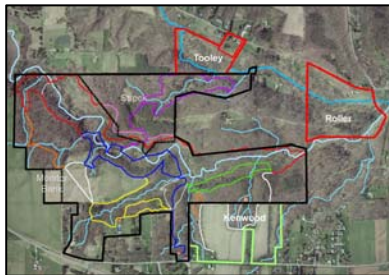


Graveled trails soon to be paved (E. Speelman).

asphalt paving will be completed in late May or early June, once temperatures warm up. The concrete pads for the benches and picnic tables will be poured around the same time, and Eagle Scout candidate Evan Miller will be constructing and installing 5 ADA compatible benches this summer. Plans for reseeding and restoring the prairie and seeding grass along the borders of the asphalt paths are also underway. We hope to have these projects completed by late June or early July.

Plans for a late-July dedication and celebration of the Kenwood ADA are underway. Please stay tuned. **For any groups looking to do a community project**, we still need help with construction of an overlook, a short stretch of ADA boardwalk, a wooden display kiosk, a 10x10-foot wooden canopy, picnic tables and interpretive signs. If interested, please contact Shelley Schrier (sschrier@sssnet.com).

NEW PROPERTY ACQUISITIONS IN APRIL – FWMP was awarded Clean Ohio grants last summer for acquisition of two properties. The 16.3-acre Tooley parcel is directly north of the Saddleback Trail and includes a large portion of the Little Killbuck Creek. The 34.4-acre Roller parcel is at



the northeast corner of WMP, and has sections of both the Rathburn Run and Little Killbuck. In December 2017, the Board carried out a capital campaign to raise the remaining \$18,000 in local match needed to purchase the Roller property, and it was an amazing success (also see page 7).



Little Killbuck Creek on the Tooley (C. Herms).

While it has taken the past fall and winter to complete the necessary paperwork and line up the local matching funds, FWMP will take ownership of both parcels by the end of April. Invasive plant removal and trash clean-up will be done in the summer. And while no trails are planned on the Tooley, we have a route scoped out to connect WMP's east Outer Trail with the Roller!

VOLUNTEERS NEEDED FOR 2018 TRAIL PROJECTS – The Trail Committee has many important trail projects, ranging from clearing fallen trees to controlling trail erosion, planned for this year to keep WMP’s trails safe and passable. A new bridge will be built on the upper Trillium Trail, and the Holtman Bridge will get some needed improvements. Other projects include:



John Abt and Chuck Armbruster clear a huge tree fall (S. Schrier).

- Ongoing trail mulching to make soppy trails more enjoyable.
- Remove debris at the Rathburn Run crossings to make the crossings safer.
- Repair the side boards and rebar along switchbacks on the Outer and Saddleback Trails.
- Install French drains on the upper Trillium Trail to divert water from hillside seeps.
- Reroute portions of the Outer Trail north of Rathburn Run to bypass erosion.
- Repair steps on the south side of the Sassafras Trail bridge.
- Install short stretches of boardwalk over perennially wet areas on the Saddleback Trail.

We need volunteers for these important projects! Please sign up at the Annual Meeting or contact Trail Committee chair, Shelley Schrier (sschrier@sssnet.com). *Important Note:* The park is under a conservation easement, which directs that no projects can be completed without the prior consent of the Board, the City of Wooster and the Killbuck Watershed Land Trust. If there are trail projects that you think need to be considered, please let Shelley know.

JOIN THE ‘INVASIVE PLANT PATROL’ THIS SEASON – Please join the Plant Committee to combat invasive plants in WMP and Kenwood Acres. ‘Invasive Plant Patrol’ (IPP) volunteers will learn to identify and help control the various species of invasive plants threatening WMP’s native flora. We will start off the season with everyone’s favorite aromatic intruder, garlic mustard.



Happy garlic mustard pullers (E. Speelman).

This past winter, IPP volunteers continued their work to control invasive shrubs on the Kenwood parcel. They did extensive work in the eastern meadow and the small ravine area west of the Kenwood parking lot. In the Education Area, black locust trees (root sprouts from nearby trees) were removed from the prairie, and prickly multiflora rose shrubs bordering the trail were dug out.



Linda Chupp (left) tackles shrubby invasives on the Kenwood (J. Durkalski).

The Committee prioritizes where to work based on various goals. Last year, IPP volunteers concentrated on the Kenwood to fulfill FWMP’s in-kind obligation to the Clean Ohio grant. In WMP, the best wildflower areas are targeted annually for garlic mustard removal, and trails that are highly used

or have heavy infestations are chosen for shrubby invasive control. Stretches of trail with overhanging multiflora rose are also a high priority. Generally, volunteers focus on a 10-foot swath on each side of the trail. So far in 2018, IPP volunteers, John Abt, Jeanne Durkalski,

Chuck Armbruster, Linda Chupp, Nancy Burkholder and Tom Johnson, have donated 34.5 hours to invasive plant control. Thank you to the Plant Committee and IPP volunteers!

Garlic mustard workdays will be held in April and May. It's a great way to enjoy spring, meet people and learn about the park! If you would like to help, please sign up at the Annual Meeting or contact Cathy Herms (herms.3@osu.edu) or John Abt (johnjabt@gmail.com).

VOLUNTEERS NEEDED FOR NEW 'INVASIVE INSECT TEAM' – With emerald ash borer (EAB) already in WMP and hemlock woolly adelgid (HWA) on the horizon, FWMP is forming the new **'Invasive Insect Team'** (IIT) to help manage and prepare for damaging exotic insects in WMP.



EAB (D. Herms).

As ash trees continue to die due to EAB, a wood-boring beetle from Asia, our main mode of response is to fell the trees before they come down on their own and potentially cause harm. We are looking for volunteers to help with surveys, begun in summer 2016, to identify where the ash trees are and document what WMP is losing from its forested areas (the “cost” of invasive species).

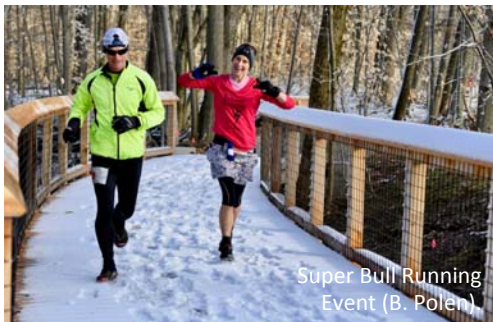
Unfortunately, HWA is another invasive insect that has made its way into Ohio. This tiny aphid-like insect, also from Asia, feeds on sap at the base of hemlock needles, causing the needles to die. HWA can form huge infestations and quickly kill hemlocks of all ages and sizes. You may have heard of the extensive actions being taken in the Great Smoky Mountains to treat hemlock stands.



HWA forms white cottony patches on the underside of hemlock needles.

HWA has now been found in Lake, Geauga and Athens Counties, and while it generally spreads slowly, HWA's appearance in WMP is inevitable. FWMP would like to start educating park users about HWA, so that we can detect and target this invasive insect early. If you would like to join the IIT and help with surveying and scouting, please contact Cathy Herms (herms.3@osu.edu).

2018 TRAIL RUNNING EVENTS IN WMP – The 2018 running season in the park kicked off with the Super Bull Trail Championships on March 3. In its second year, the event SOLD OUT again at 150 runners. With distances of 12.5k, 25k, and 50k available, the runners collectively covered 2,500+ miles that Saturday morning! There were plenty of local runners, as well as those from Cleveland, Columbus and even nearby states.



Super Bull Running Event (B. Polen)

The Running Community is a wonderful steward of the WMP. Runners donate their time and energy to park projects, join FWMP, and always strive to leave the park in better shape after each event. They also provide monetary support. At FWMP's December 2017 board meeting, **Brian Polen** of Vertical Runner presented FWMP with a check for \$2500 in proceeds generated from the 2017 running events.

After the recent Super Bull event, Brian wrote in a message to the Running Community, “The addition of the breathtaking new bridges that were part of the course, along with the new trail ways, are an exciting improvement to the park! As long as we can keep putting our donations into the capable hands of The Friends of Wooster Memorial Park, who knows what we can accomplish together.” We sincerely thank the Running Community for their support!



Other running events to come in 2018 include the Kid's Camp and the Trail Monster Mini Series (see below). For more information, please contact Brian Polen (www.verticalrunner.com).

- **Kid's Camp:** Every Tuesday and Thursday from July 10 to August 16, 6:30-7:30pm. Over 100 kids, ages 5-12, will be using WMP to get ready to show the adults what they are made of at a series of 5k races in the late summer. Must be pre-registered to participate.
- **Trail Monster Mini Series, Season Finale:** July 15 at 8:00am. This is the last of a 3-race series, and proceeds benefit WMP. 5k, 15k and kids 1-mile distances mean that anyone can participate. Pre-registration and race day registration available.

FWMP'S MEMBERSHIP COMMITTEE FINDS CREATIVE WAYS TO REACH OUT – The FWMP

Membership Committee was formed in spring 2017 with the purpose of increasing membership and improving engagement with current members. In less than a year, the committee has helped to double FWMP's membership by increasing publicity and finding creative ways to raise park awareness, such as last year's Fall Hiking Challenge. Committee members also attend running and FWMP events, where they post a banner and talk to participants about joining. They are tending booths at places like the Artiflex Health Fair, the recent Shreve Sensation Migration and the upcoming Scarlet, Gray and Green Fair. Committee members (Dan Buehler, chair, Jenni Adams, Jeanne Fedyk, Shelley Schrier and Emily Speelman) meet regularly, and coordinate their activities with the Education and Public Awareness Committee.



The 2017 Fall Hiking Challenge was a great success. We had 32 people, many of them new to FWMP, complete the challenge, hiking a total of 476 miles, and taking a collective 1,159,303 steps in the park!!! Check the FWMP website or park kiosk in September for details about the 2018 Fall Hiking Challenge. Thank you to our fantastic Membership Committee!

FWMP WEBSITE UPDATES INCLUDE EVENTS CALENDAR AND SPECIES LISTS – FWMP

Director and website wizard, Emily Speelman, is continuing to improve the look and functionality of the FWMP website (www.friendsofWMP.com) and Facebook site (www.facebook.com/FriendsOfWoosterMemorialPark/). A new park calendar now makes it easy to sync FWMP events to your Google Calendar, so you'll never miss a hike.



Also on the website are different lists of birds and trees that can be found in the park. The **bird list** was provided by FWMP member Randy Rowe, who has been surveying birds in the park for years. The list highlights both common and migratory birds that have been or could be spotted in the park, and an easy-to-print version can be downloaded from the website. The **tree list** was provided by FWMP member Marvin Smith, who has led many of FWMP's plant hikes. Marvin's list includes the wide range of trees found in the park, and a printable version will be available in the near future.

Stay tuned for **future lists** on butterflies, reptiles and amphibians, mushrooms, flowering plants by season, and more! Thank you to Emily, Randy and Marvin for these great contributions to the FWMP website. Please take a look and let us know what you think.

iNATURALIST PROMOTES SHARING AND STEWARDSHIP OF FLORA/FAUNA IN WMP – The park is a great place to observe wildlife. Be it birds or insects, mammals or plants, grasses or fungi, there's so much to see. As you just read, the FWMP website now has printable lists of the bird and tree species you might see in the park at various times of the year, and more lists are to come. *But we also want to know what you find in WMP.*



The City and FWMP face new management challenges in WMP every year. For us to best manage the park’s natural resources, we need to understand when and where organisms occur. **iNaturalist** is a way to help us do that. This web-based resource will provide a venue for documenting and sharing the tremendous diversity of life in WMP. You can upload photos of plants, animals, mushrooms, etc. to the website from your smartphone or computer. Identify them or not, because other iNaturalist visitors can help. It is a great way to keep track of the plants and animals you find in the park, and you can also see what other park enthusiasts have seen.

And by sharing your park finds, you will also be participating in scientific research. Whether you have seen WMP’s rare West Virginia white or a ubiquitous wildflower, every observation can contribute to biodiversity science. Plus, iNaturalist will share our findings with data repositories like the Global Biodiversity Information Facility, so that other scientists can use the data we collect for WMP. All we have to do is observe, photograph and upload.



Box turtle in WMP (E. Spielman).

Getting started is easy: sign up (it is easy and free) (www.iNaturalist.org), add the “Wooster Memorial Park” project (www.iNaturalist.org/projects/wooster-memorial-park), and begin sharing your great finds! Visit the FWMP website to learn more about how to participate, or visit the iNaturalist website to learn more about what it can do to help us manage WMP’s natural resources.

IF THIS LINE IS HIGHLIGHTED, WE HAVE NOT RECEIVED YOUR RENEWAL – PLEASE RENEW – Your membership is critical to FWMP. Renewal forms will be available at the Annual Meeting, and can also be found on our website (www.friendsofwmp.com).

A Message from the FWMP President...

Overwhelming Community Support Makes the FWMP Capital Campaign for Property Acquisition a Huge Success

When the FWMP Board began a capital campaign on December 1, 2017, to raise money for the purchase of 34.4 acres of forest and stream habitat near the northeast corner of WMP, we were hopeful, but not sure what to expect. FWMP had received a Clean Ohio grant through the Ohio Public Works Commission for 75% of the total cost (\$240,700) of this valuable property earlier in 2017. The \$180,525 in funds to be contributed by the grant was contingent on the remaining 25% (\$60,175) to be raised by FWMP. As of Thanksgiving, we had acquired \$42,500, but still had \$18,000 to go before December 31 for us to capitalize on this unique opportunity.



This predominantly forested property is at the northeast corner of Wooster Memorial Park, and has a prominent ridge with dramatic views of the Rathburn Run to the south and the Little Killbuck Creek to the north.

A generous \$5,000 contribution from the **Killbuck Watershed Land Trust (KWLT)** kicked the campaign off and reduced our need considerably. The KWLT has been an amazing partner and supporter of FWMP and the park over the years, making past acquisitions for WMP totaling 125 acres a possibility. *An additional 58 contributors from the FWMP and Wooster community met the remaining challenge wholeheartedly, and showed how much they appreciate the natural beauty and great recreational resources that are the park.* By the end of the year, **WE RAISED \$21,165!** The additional funds are earmarked for improvements on the property.

By expanding WMP with this property, we are able to:

- Increase recreational opportunities by adding distance and variety to our hiking trails.
- Provide more opportunities for stream exploration and education by increasing the amount of the Little Killbuck Creek and Rathburn Run that flow through the park.
- Help buffer WMP's natural resources from development, and protect additional forest and stream habitats for Ohio's native flora and fauna.
- Protect the water supply for Wooster and surrounding communities by preserving more of the Run and Little Killbuck watersheds that feed the source, the Killbuck Creek.
- Protect additional forested land in the largest remaining block of forest in Wayne Co.
- Help to preserve more of Ohio's natural heritage in perpetuity for the people of Ohio.

We cannot thank you enough for your contributions. We are truly humbled by the generosity of our community.

Shelley Schrier, FWMP President

