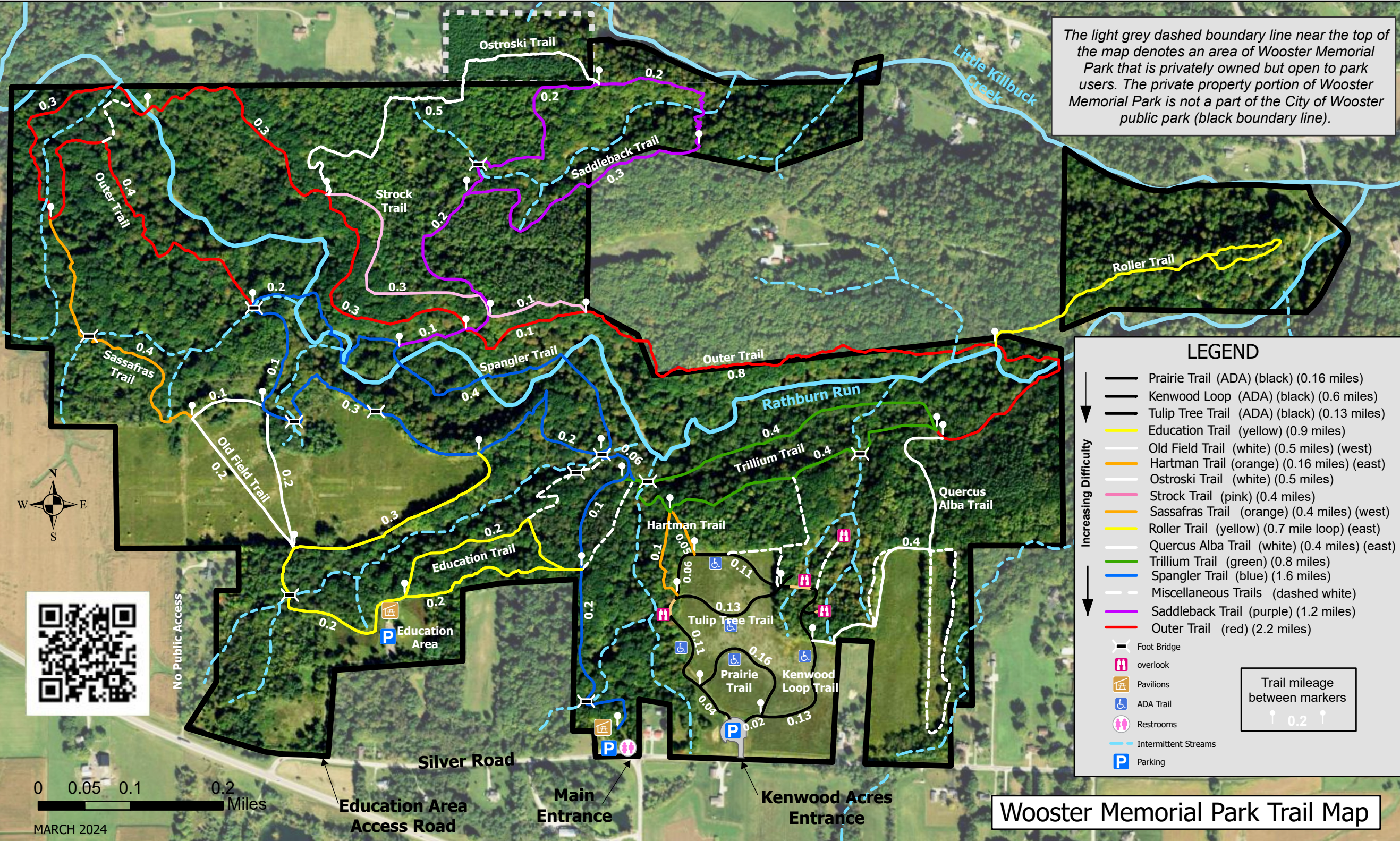


The light grey dashed boundary line near the top of the map denotes an area of Wooster Memorial Park that is privately owned but open to park users. The private property portion of Wooster Memorial Park is not a part of the City of Wooster public park (black boundary line).



LEGEND

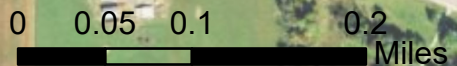
- Prairie Trail (ADA) (black) (0.16 miles)
 - Kenwood Loop (ADA) (black) (0.6 miles)
 - Tulip Tree Trail (ADA) (black) (0.13 miles)
 - Education Trail (yellow) (0.9 miles)
 - Old Field Trail (white) (0.5 miles) (west)
 - Hartman Trail (orange) (0.16 miles) (east)
 - Ostroski Trail (white) (0.5 miles)
 - Stroock Trail (pink) (0.4 miles)
 - Sassafras Trail (orange) (0.4 miles) (west)
 - Roller Trail (yellow) (0.7 mile loop) (east)
 - Quercus Alba Trail (white) (0.4 miles) (east)
 - Trillium Trail (green) (0.8 miles)
 - Spangler Trail (blue) (1.6 miles)
 - Miscellaneous Trails (dashed white)
 - Saddleback Trail (purple) (1.2 miles)
 - Outer Trail (red) (2.2 miles)
-
- ⊢ Foot Bridge
 - ⊢ overlook
 - ⊢ Pavilions
 - ♿ ADA Trail
 - ♿ Restrooms
 - Intermittent Streams
 - P Parking

Increasing Difficulty ↓

Trail mileage between markers
↑ 0.2 ↑



No Public Access



MARCH 2024

Education Area Access Road

Main Entrance

Kenwood Acres Entrance

Wooster Memorial Park Trail Map